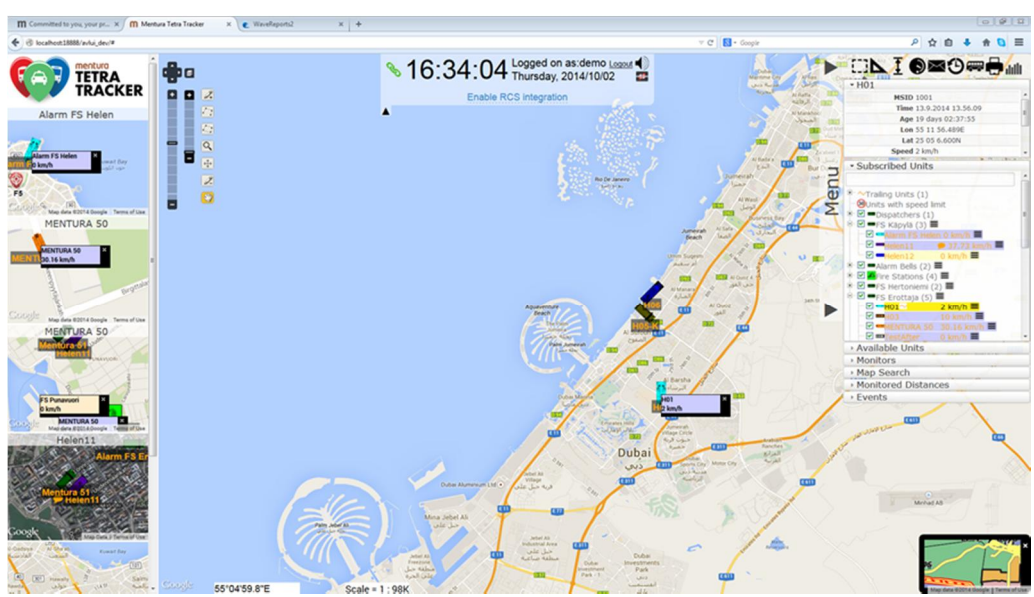




MENTURA Tracker / AVLS

The MENTURA TRACKER is an Automatic Vehicle Location Management system that provides real-time and historical information about vehicle location and movement. The information is made available for users with WEB browsers, so no additional client applications are required. The TETRA TRACKER supports multiple location protocols (TETRA, LTE, 3G), all common map material and all major TETRA radios with built-in position-



Contact Information:
 Mentura Group Oy
 Keilaranta 1
 02150 Espoo
 Finland

TEL: +358 4244 801
 FAX: +358 4244 80800
 sales@menturagroup.com
 www.menturagroup.com

Professional organisations need situation awareness to be able to lead their operations accurately and efficiently. The essential part of the awareness is knowledge of location and status of each patrol on the field, ability to deliver immediately commands to the right units and gathering situation updates from units.

The Mentura TETRA Tracker is a field proven solution for Automatic Vehicle and Personnel Location needs.

Benefits:

- Real-time vehicle location for web-based clients.
- Location histories
- Web-based maps from various sources are supported.
- Geocoding, reverse geocoding
- Geofences
- Messaging to / from units (encrypted messaging to radio clients)
- OMA MLP interface for 3rd party GIS Clients
- Automatic alerts (e.g. service maintenance, oil change) based on time or distance driven by vehicles.
- Field proven and scalable solution
- Easy to use and can be localised to multiple languages.

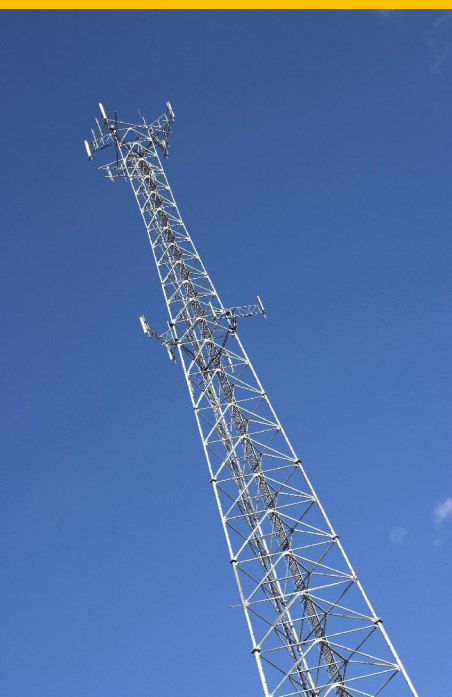
Supported platforms:
 Windows 2008 Server
 Linux

Network connectivity:
 Airbus TCS / Motorola SDR
 Rohill TIG
 Radio (PEI)

About Mentura Group
 Mentura Group Ltd provides technology solutions that help PMR user organisations to improve the efficiency and security of their operations.

Mentura Group's customers include network operators, PMR user organisations and system integrators.

Mentura Group is a member of the TETRA and Critical Communications Association (TCCA).





Mentura Tracker Features

Feature	*= Standard ** = Option
User authentication	*
Multi-fleet management. Units can be split to fleets with specific access rights. This allows limiting unit management to certain users, but also to share the system between multiple independent organisations.	*
Unit search and selection to map (or layer)	*
Unit location reporting management (permanent and temporary triggers). Single or group selection.	*
Messaging to units / groups	*
Multiple map windows with free layout options for view zoom, centring and layer display/hide options.	*
Quick context switching windows on the side (reducible and tracking different targets)	*
Layering: Units, POIs, markers. User can define new layers. For each map window, the layers to be shown are selected.	*
Location markers (type, name, symbol, location). Points, lines, ellipses, polygons, paths.	*
Closest objects (select an object on map (unit, POI, marker), search the closest objects, filter by type and max distance). Will list objects close and their current distance.	*
Distance measurement between 2 objects or locations. Can be an active window that is updated in real-time. Possible to define minimum and maximum distance for alert.	*
Unit history on map for selected unit at selected time interval-	*
Unit control: Select unit: allow change of reporting period now and temporary triggers. Shows the current location, speed and status attributes in real time.	*
Unit trace: The movement of selected units (trail) will be marked on map in real-time until trace is deactivated.	*
Speed monitoring: Define max or minimum speeds that create an alert.	*
Unit window: Select a unit: a new map window opens that is constantly centred on the selected unit.	*
Search circle: Define a centre-point, and speed of growing. The circle will start growing in the defined speed (shows the possible location area of a target).	*
Address search, reverse address search (address material required)	**
Route planning and navigation	**
Geofence: Define a polygon on the map, define fence type: alarm when a unit enters, alarm when a unit exits, define unit(s) or select any, select if unit gets the alarm of fence.	*
Geofence 2: Define a route, alarm when unit enters route, alarm when unit exits route. Alarm when unit stops moving on route.	*
User defined Monitoring of units: geofence events, speed events etc. with configurable actions when events occur (alert dispatcher, send message to unit etc.).	*
Reporting on unit statuses, unit movements etc.	*
Fleet Management Reports (unit activity, idle times, mileage, speed etc.)	*
Management of location forwarding (easily define list of locations where the locations of specified units are forwarded)	*
Tracking of units in the TETRA network, thus enabling Location Area and status of the units.	**
Database queries for mobile units and Web Clients	**
Indoor target catalogue for Indoor and hybrid positioning	**
Open Sensor Integration	**
Incident And Task Management	**
Voice Dispatcher	**
Airbus RCS9500 Integration (Voice Client)	**

The Mentura Tracker is a multi-protocol advanced fleet management and situation awareness solution based on a certified positioning gateway and browser based user interfaces for rapid deployment.

Contact Information:
Mentura Group Oy
Keilaranta 1
Finland

TEL: +358 4244 801
FAX: +358 4244 80800
sales@menturagroup.com
www.menturagroup.com